

Murchison

Community Emergency Management Plan

2025





The development of this plan was made available through the support of



Australian Government



Original developed with the assistance
of The Six C's Group 2025

Contents

1

Overview

2

About Murchison

3

Hazards

4

Objectives

5

Local Priorities

6

Key Issues & Vulnerabilities

7

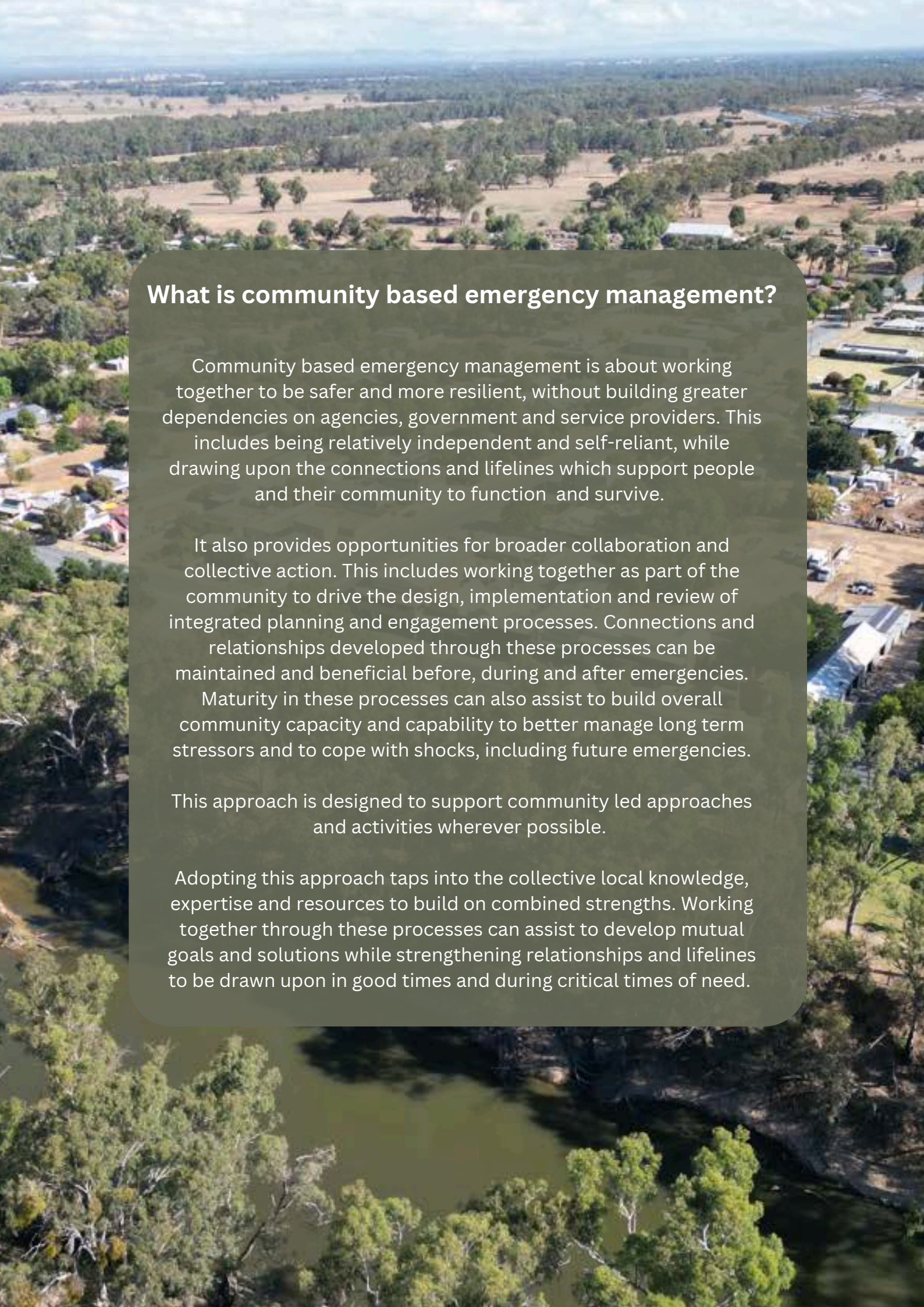
Values

8

Emergency Contacts

9

**Murchison Disaster Resilience
Group Members**

An aerial photograph of a rural landscape. In the foreground, there's a river or a large pond surrounded by lush green trees. Beyond the water, the land is a mix of dry, brownish-yellow fields and scattered green trees. Some small buildings and structures are visible in the distance, nestled among the trees. The sky is overcast with soft, grey clouds.

What is community based emergency management?

Community based emergency management is about working together to be safer and more resilient, without building greater dependencies on agencies, government and service providers. This includes being relatively independent and self-reliant, while drawing upon the connections and lifelines which support people and their community to function and survive.

It also provides opportunities for broader collaboration and collective action. This includes working together as part of the community to drive the design, implementation and review of integrated planning and engagement processes. Connections and relationships developed through these processes can be maintained and beneficial before, during and after emergencies.

Maturity in these processes can also assist to build overall community capacity and capability to better manage long term stressors and to cope with shocks, including future emergencies.

This approach is designed to support community led approaches and activities wherever possible.

Adopting this approach taps into the collective local knowledge, expertise and resources to build on combined strengths. Working together through these processes can assist to develop mutual goals and solutions while strengthening relationships and lifelines to be drawn upon in good times and during critical times of need.



Overview

Introduction

The Murchison Community Emergency Management Plan (CEMP) has been developed by the local community and the Murchison Disaster Resilience Group acknowledges all who have participated and contributed toward the development of this document.

This plan is managed and distributed by the Murchison Disaster Resilience Group, a sub-committee of the Murchison Community Planning Group. All feedback and opportunities for participation to implement and progress the plan is welcome.

While every effort has been made to ensure that information in this document is correct at the time of printing, changes after the time of publication may impact the accuracy of the information.

The Murchison Disaster Resilience Group is not responsible for any loss suffered in connection with the use of this document.

Aim

This plan is to empower the community of Murchison with the knowledge and resources needed to effectively prepare, manage and recover from disasters.

2

About Murchison

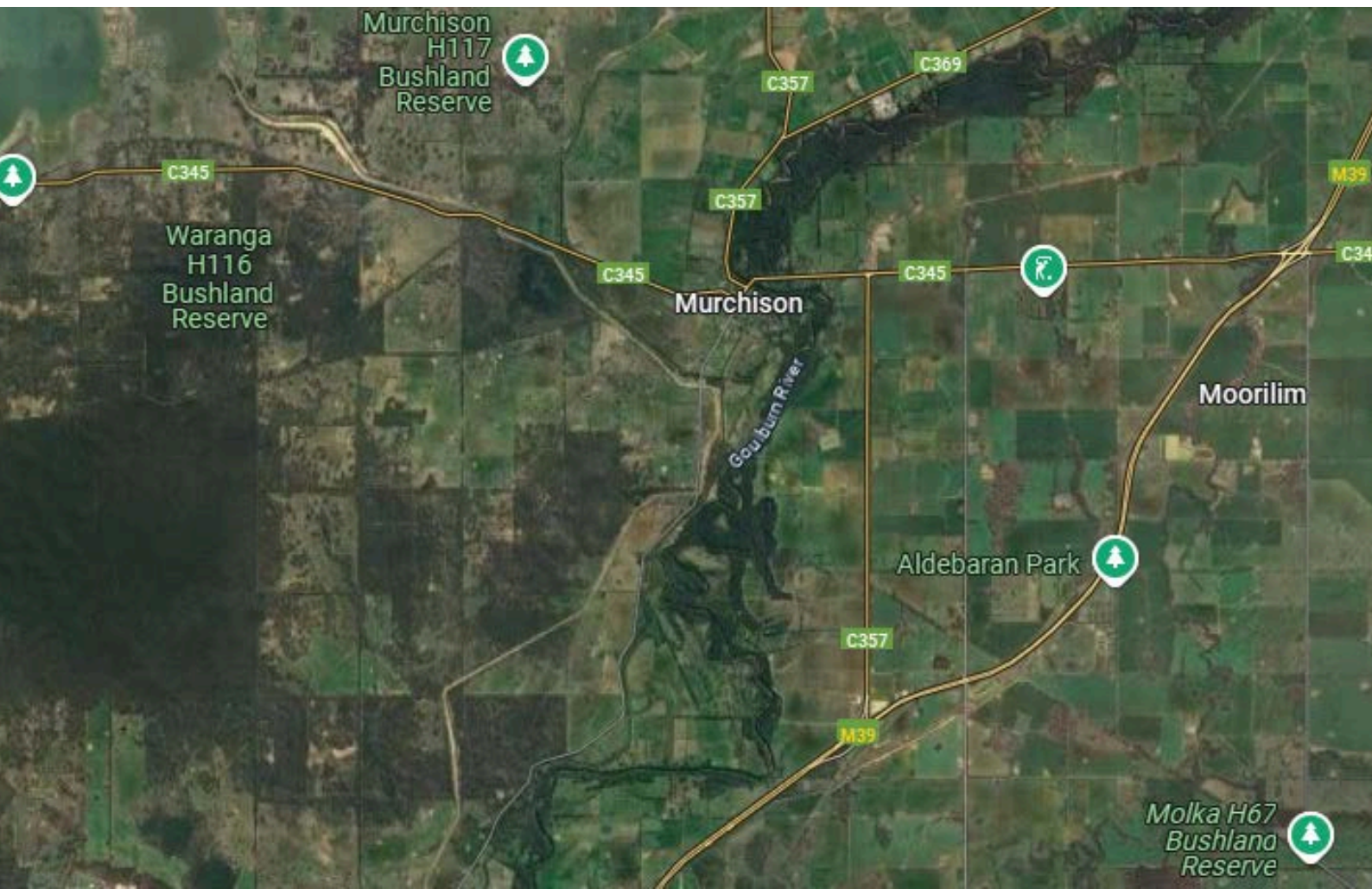
Murchison is a town located on the banks of the Goulburn River, 35km south of Shepparton in the Greater Shepparton City Council. Murchison is surrounded by countryside which contains orchards, vineyards and dairy farms.

Murchison has been witness to a rich tapestry of monumental historical events.

An Aboriginal Protectorate Station was established in 1840 and when that closed, and the township, named after Captain John Murchison, was established in 1854.

Murchison was the site of the legendary Murchison Meteorite which broke up in the skies over the town on 28 September 1969. Fragments of the meteorite are on display in many museums around the globe with the meteorite estimated to be 5 billion years old.

During World War II, 4,000 Italian, German and Japanese POWs were detained at Murchison.



Statistics



884 people



50 years of age
(average age)



233 families



448 private dwellings





AND THE FAMILY
FATHER OF MARY
MRS. D. MARY
AND THE FAMILY
THE FINE AND LOVELY
IN 1910
GREAT WAR 1914-1918
THE FINEST HOUR
HONORABLE MARY D. MARY



IN MEMORY OF THOSE WHO SERVED IN
KOREA, MALAYA, VIETNAM
IRAQ, AFGHANISTAN



3

Hazards



Bushfire & Grass Fire

Murchison, Victoria, is at risk of bushfires due to its rural landscape, which includes extensive grasslands, forests, and farmland that can be higher risk during hot, dry conditions. The region's climate, particularly during summer, increases the likelihood of fire ignition and rapid spread. Strong winds can further intensify fire behaviour, making it difficult to control.



Flood

Most of the Murchison township is believed to be safe from flooding except during very large floods. However, low-lying properties, farmland, fishing spots and camping areas can often be affected by minor to moderate flooding. River levels can rise within several hours of heavy rain, and during floods, floodwater can travel from Goulburn Weir to Murchison in 12-15 hours and from Seymour to Murchison in three to three and a half days.



Heat

Murchison's inland location means it experiences prolonged periods of high temperatures, which can lead to heat stress, dehydration, and increased health risks for vulnerable groups such as the elderly, young children, and those with pre-existing medical conditions.



Storms

Storms can pose a risk, including severe thunderstorms that can bring heavy rainfall, strong winds, lightning, and hail. Storms can lead to flash flooding, fallen trees, power outages, and damage to homes, farms, and infrastructure. Strong winds also pose a threat to crops and livestock, impacting the local agricultural economy. Given its rural setting, storm-related disruptions to power and telecommunications can isolate the community, making preparedness and communication strategies essential for reducing risks and ensuring a swift recovery.

MURCHISON
SERVICE
STATION

COMMERCE WOOL
PROPERTY INSURANCE

MURCHISON
SERVICE STATION

SERVICES
WHEEL
ALIGNMENTS
TYRES
ROADWORTHYS
F1162443



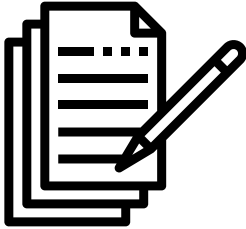
ONE

25





Objectives



Administrative

Objective 1.

Write to the Murchison Community Assets Committee and propose the establishment of a Murchison Disaster Resilience Group sub-committee.

Objective 4.

Discuss roles within the Murchison Disaster Resilience Group and develop procedures.

Objective 2.

Seek approval from the Murchison Assets Committee to use the Murchison Community Centre as a Community Hub.

Objective 5.

Develop a response plan that outlines triggers and actions for the Murchison Disaster Resilience Group.

Objective 3.

Seek approval from the Murchison Assets Committee to install a lock box to store the keys at the Community Centre for use of the Murchison Disaster Resilience Group.



Community connections

Objective 6.

Develop a link with the community in Murchison East.

Objective 7.

Develop a resource that lists credible sources for use in sharing disaster related information to community.

Objective 8.

Construct a Disaster Resilience noticeboard on Stevenson St, Murchison to share disaster related information with the community.

Objective 9.

Implement a “Hey Neighbour” style strategy to connect the community:

- Design an A4 flyer that introduces the community to the Murchison Disaster Resilience Group
- Distribute the flyers to the community
- Plan for a community event to celebrate the new noticeboard and group that could include representatives from CFA, VicSES, VicPol providing community safety information.



Building Capacity & Capability

Objective 10.

Record the history of emergencies that have impacted Murchison and surrounds.

Objective 13.

Build a relationship with the Murchison-Toolamba Football/Netball Club.

Objective 11.

Conduct education session/s to increase community knowledge of emergency warnings and what happens when disaster strikes (who does what and when).

Objective 14.

Conduct education session/s on disaster recovery.

Objective 12.

Explore the establishment of a Community Hub. The hub could be a place where the community can gather and share information.

- Equipment required to operate a Community Hub includes:
- Satellite internet connection
- Generator with appropriate connections
- Computer
- Printer
- Whiteboard

Objective 15.

Map defib locations within the town.

MURCHISON

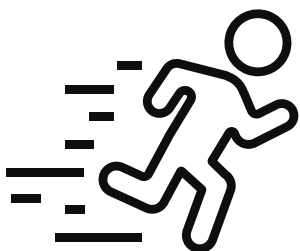
COMMUNITY CENTRE

KINDERGARTEN

MENS SHED

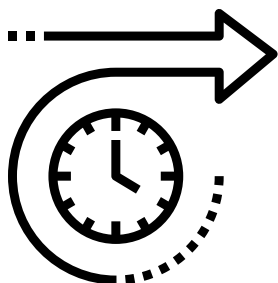
5

Local Priorities



Short term goals

The immediate focus is on formally establishing the Murchison Disaster Resilience Group, ensuring its recognition as a sub-committee of the Murchison Community Assets Committee. Additionally, exploring grants to build a noticeboard and purchase equipment for the Murchison Community Hub as well as informing the community of the establishment of the group.



Medium term goals

To build resilience within the community, education sessions will be held as well as the creation of a Murchison Disaster Resilience, Response Plan.



Long term goal

Exploring recovery and what happens to community after a disaster including what support is available as well as a look into the past by recording the history of emergencies within Murchison and surrounds.



Key Issues & vulnerabilities

Key issues & vulnerabilities

- The Murchison SES Unit is looking recruit new volunteers to be sustainable.
- Average age of residents is 50 years old.
- Challenges in accessing emergency care during disasters.



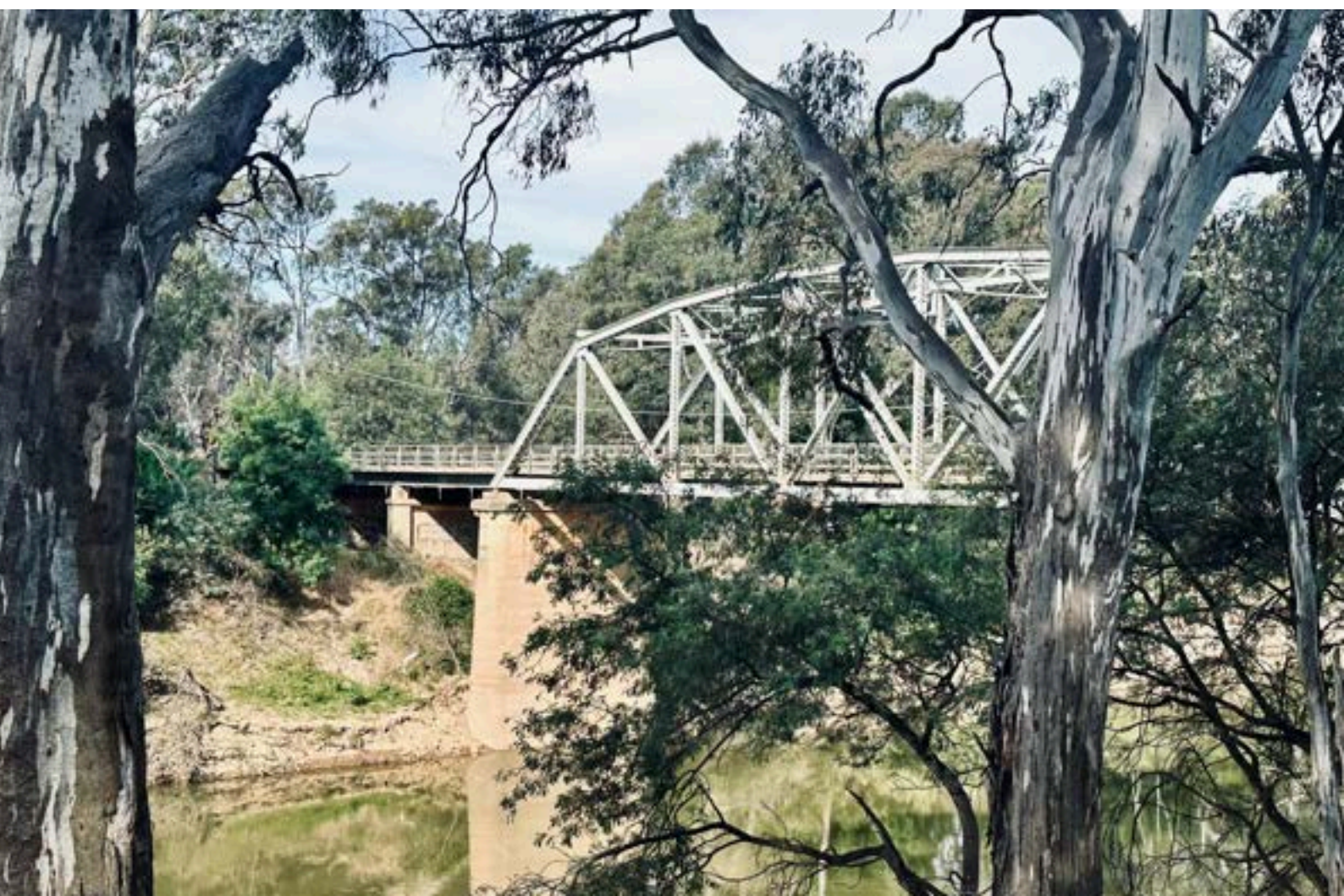


Values

“We value our community.”

“The town centre.”

“Working together”



SHORT TERM OBJECTIVES

Action	Lead	Support	Due By	Complete	Comments
Write to the Murchison Community Assets Committee and propose the establishment of a Murchison Disaster Resilience Group sub-committee.					
Seek approval from the Murchison Assets Committee to use the Murchison Community Centre as a Community Hub.					MDR Group can contact Manager Emergency Management & Resilience to notify when Hub is being activated. A 12 month blanket risk assessment to be prepared and discussions with Community Asset Committee to occur to document process.
Seek approval from the Murchison Assets Committee to instal a lock box to store the keys at the Community Centre for use of the Murchison Disaster Resilience Group.					
Explore grant opportunities to purchase the following equipment required to operate a Community Hub: -Satellite internet connection -Generator with appropriate connections -Computer -Printer -Whiteboard					
Explore grant opportunities to build a Disaster Resilience noticeboard in Stevenson St, Murchison					

SHORT TERM OBJECTIVES

Action	Lead	Support	Due By	Complete	Comments
Implement a "Hey Neighbour" postcard strategy to better connect the community <ul style="list-style-type: none">Design an A4 flyer that introduces the community to the Murchison Disaster Resilience GroupDistribute the flyers to the community Plan for a community event to celebrate the new noticeboard and group					
Develop a link with the community in Murchison East.	Noela				
Build a relationship with the Murchison-Toolamba Football/Netball Club.	Noela				Whilst they said that they would help out where they can, they did not want to formalise the arrangement.

MEDIUM TERM OBJECTIVES

Action	Lead	Support	Due By	Complete	Comments
Discuss roles within the Murchison Disaster Resilience Group and develop procedures.					
Develop a response plan that outlines triggers and actions for the Murchison Disaster Resilience Group.					
Develop a resource that lists credible sources for use in sharing disaster related information to community.					
Conduct education session/s to increase community knowledge of emergency warnings and what happens when disaster strikes (who does what and when)					
Map defib locations within the town.					

LONG TERM OBJECTIVES

Action	Lead	Support	Due By	Complete	Comments
Record the history of emergencies that have impacted Murchison and surrounds.					
Conduct education session/s on disaster recovery.					



Emergency Contacts

Agency	Phone Number	Website
Triple Zero	000	
VicEmergency	1800 226 226	emergency.vic.gov.au
VicSES	132 500	ses.vic.gov.au
CFA		cfa.vic.gov.au
VicTraffic	13 11 70	traffic.transport.vic.gov.au
Police assistance line & online reporting	131 444	onlinereporting.police.vic.gov.au
Bureau of Meterology	Automated warnings - 1300 659 210	bom.gov.au
Powercor Outages	13 24 12	powercor.com.au/power-outages-and-emergencies/
Poisons Information Line	13 11 26	austin.org.au/poisons
Nurse on Call	1300 60 60 24	
Better Health Channel		betterhealth.vic.gov.au
Greater Shepparton City Council	5832 9700	greatersepparton.com.au



Murchison Disaster Resilience Group

The Murchison Disaster Resilience Group was established in 2025 and consists of the following members:

Members

Rachel

Noela

Des

Peter

Jenny

Thaniel

Derk

Rob

Linda

The Murchison Disaster Resilience Group welcomes new members.

