

An aerial photograph of a community park. In the foreground, there are two tennis courts, one blue and one green, with a small building and a parking lot nearby. A dirt road runs along the bottom left. The background shows a large open field with trees and a distant town.

# **Bunbartha**

## **Community Emergency Management Plan**

**2025**





The development of this plan was made available through the support of



Original developed with the assistance of The Six C's Group (March 2025)

# Contents

**1**

**Overview**

**2**

**About Bunbartha**

**3**

**Hazards**

**4**

**Objectives**

**5**

**Local Priorities**

**6**

**Key Issues & Vulnerabilities**

**7**

**Values**

**8**

**Emergency Contacts**

**9**

**Bunbartha Emergency Group  
members**



An aerial photograph of a flooded landscape. A river flows through the center, surrounded by dense green vegetation. In the foreground, there are numerous dead, bleached trees and shrubs, suggesting a recent flood event. The sky is overcast with soft, grey clouds. The text is overlaid on a semi-transparent grey box in the upper half of the image.

## What is community based emergency management?

Community based emergency management is about working together to be safer and more resilient, without building greater dependencies on agencies, government and service providers. This includes being relatively independent and self-reliant, while drawing upon the connections and lifelines which support people and their community to function and survive.

It also provides opportunities for broader collaboration and collective action. This includes working together as part of the community to drive the design, implementation and review of integrated planning and engagement processes. Connections and relationships developed through these processes can be maintained and beneficial before, during and after emergencies.

Maturity in these processes can also assist to build overall community capacity and capability to better manage long term stressors and to cope with shocks, including future emergencies.

This approach is designed to support community led approaches and activities wherever possible.

Adopting this approach taps into the collective local knowledge, expertise and resources to build on combined strengths. Working together through these processes can assist to develop mutual goals and solutions while strengthening relationships and lifelines to be drawn upon in good times and during critical times of need.



# Overview

## Introduction

The Bunbartha Community Emergency Management Plan (CEMP) has been developed by the local community and the Bunbartha Emergency Group acknowledges all who have participated and contributed toward the development of this document.

This plan is managed and distributed by the Bunbartha Emergency Group. All feedback and opportunities for participation to implement and progress the plan is welcome.

While every effort has been made to ensure that information in this document is correct at the time of printing, changes after the time of publication may impact the accuracy of the information.

The Bunbartha Emergency Group is not responsible for any loss suffered in connection with the use of this document.

## Aim

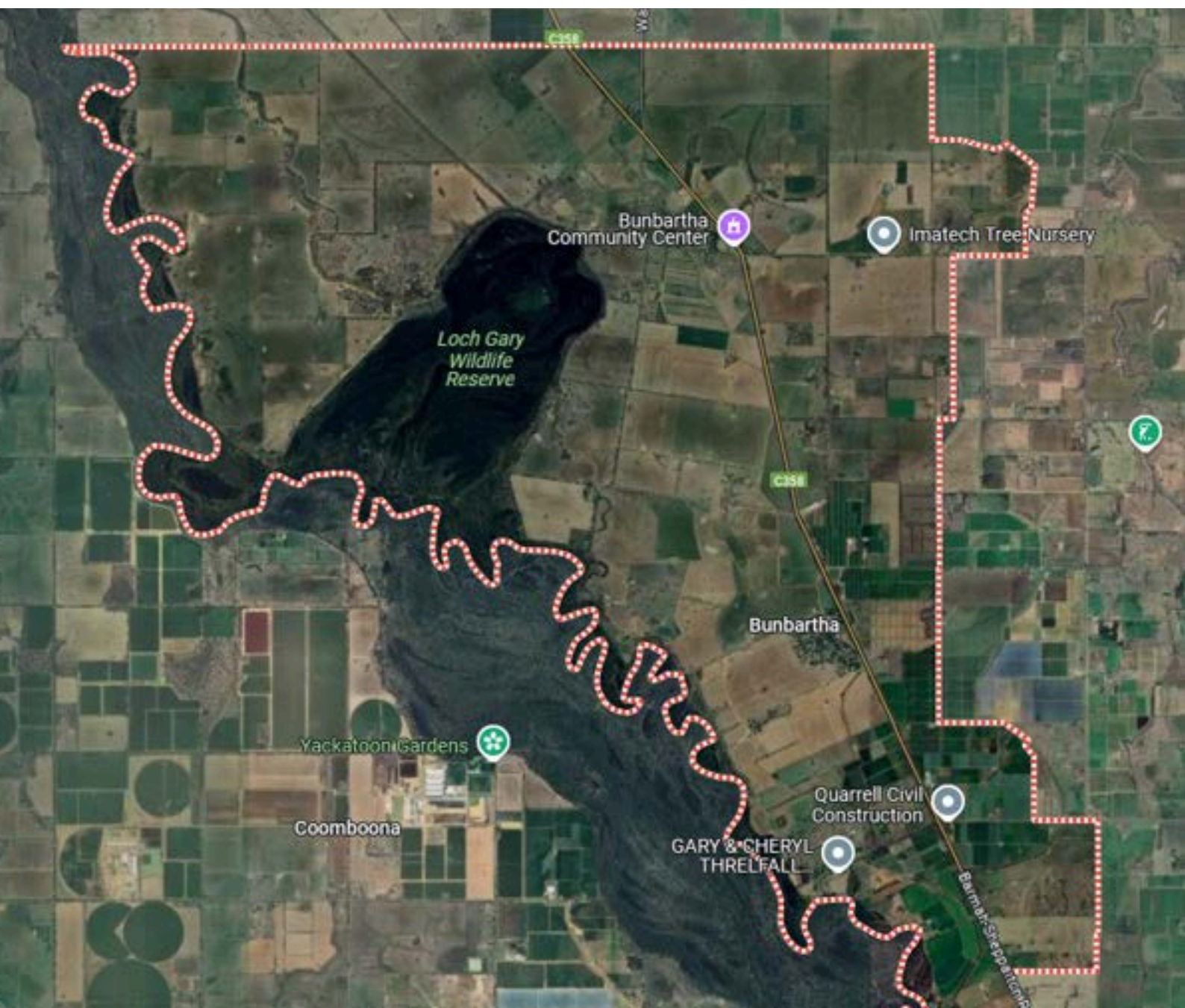
To safeguard the Bunbartha community by building a comprehensive emergency management plan that emphasises prevention, preparedness, response and recovery, ensuring the well-being of all community and residents in times of crisis.



# 2

## About Bunbartha

Bunbartha is a small rural locality in northern Victoria, situated within the Greater Shepparton region. Known for its agricultural landscape, the area is home to dairy farms, orchards, and cropping enterprises. Located near the Goulburn River, Bunbartha offers access to natural bushland and recreational areas, making it popular for camping, fishing, and outdoor activities. The community is close-knit, with a strong connection to farming and regional industries.





# Statistics



**313 people**



**40 years of age  
(average age)**



**9 lone households**



**114 private dwellings**

2021 Census Data







# 3

## Hazards

### Bushfire, Grass Fire, Broad Acre Fire



Bunbartha has historically had a low bushfire risk, but climate change and drier conditions are increasing the threat. Hotter temperatures and reduced rainfall are creating drier vegetation, raising the risk of grassfires and fast-moving fires. While major bushfires have been uncommon, fire preparedness and hazard reduction are becoming more important.

### Heat



Rising temperatures and more frequent heatwaves pose a growing risk to the people of Bunbartha, especially older residents, young children, and those with health conditions. Extreme heat can cause heat stress, dehydration, and increased hospitalizations, while also impacting livelihoods reliant on farming.

### Flood



Bunbartha, Victoria, has a history of flooding due to its proximity to the Goulburn River. Major floods have impacted the area in 1974, 1993, 2010, and 2022, causing property damage, road closures, and agricultural losses. The October 2022 flood was particularly severe, isolating & inundating properties and farmland. Residents have relied on levees, sandbagging, and emergency response efforts to mitigate impacts. These events highlight the need for ongoing flood preparedness and mitigation measures in the region.

### Storms



Bunbartha, is prone to severe storms, particularly during the warmer months, bringing strong winds, heavy rainfall, and lightning strikes. These storms have been known to cause flash flooding, property damage, and power outages, impacting both residents and local agriculture. Hailstorms and high winds have also contributed to fallen trees and damaged infrastructure.

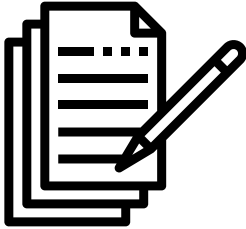








# Objectives



## Administrative

### Objective 1.

Proposal to seek the establishment of the group as the Bunbartha Emergency Group and submit a formal request to the Bunbartha Tennis Club Committee to recognise it as a sub-committee.

### Objective 2.

Write to Goulburn-Murray Water asking permission to sandbag the low spots of Loch Garry Flood Protection District levee when advised of a moderate flood or above.





# Community connections

## Objective 3.

Ensure the elderly are cared for before, during and after disasters. Propose the following:

- establish a phone tree
- door knock

## Objective 5.

Enhance community communication by developing a Whats App group

## Objective 4.

Develop a community directory that outlines skills and equipment of the Bunbartha community







# Building Capacity & Capability

## Objective 6.

Enhance the facilities at the Bunbartha Recreation Reserve to enable the centre to be used as a Community Hub that could be opened by the community when safe after an emergency or for community respite to heat

- Purchase a generator
- Upgrade the kitchen to a commercial kitchen
- Purchase another water tank
- First Aid Kit/Snake kit
- Steel scoops to assist with filling sandbags
- Electronic sign to announce when the hub is open and community safety preparedness messaging
- Develop a community hub model to fit community requirements (triggers to open, roles and role descriptions, services etc)

## Objective 7.

Increase skills within the community. Training to include:

- First Aid training
- Chainsaw training
- Mental health first aid training
- Grant writing course

## Objective 8.

To increase preparedness to all hazards, by purchasing a shipping container to hold the following:

- Plastic pallets (to stack sandbags)
- Sand bags
- Community hub items
- Install posters on how to correctly fill sandbags (include a QR code linked to VicSES short videos on how to sandbag)

## Objective 9.

Increase knowledge in preparedness, response and recovery activities:

- How to sandbag effectively
- What you can and can't do before, during and after a flood

## Objective 10.

Develop a Flood Action Card that includes:

- Flood triggers
- State priorities
- Council 24/7 phone number
- Community actions
- Establishment of flood lookouts similar to flood warden role
- Map with location of levees
- A list and map of what areas flood first within the community





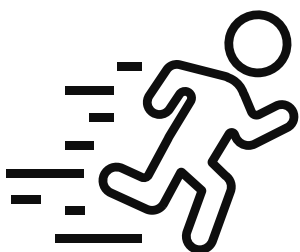
No 2

No 3



# 5

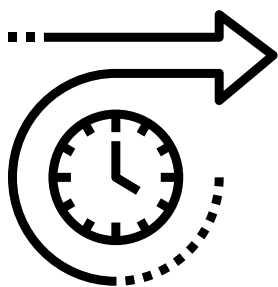
## Local Priorities



### Short term goals

The goal of this initiative is to bolster Bunbartha's community resilience and emergency preparedness by formally establishing the Bunbartha Emergency Group and enhancing readiness for floods and other disasters. Key components of the project include strengthening community communication through a directory of local skills and resources, a phone tree, and a WhatsApp group.

Additionally, the initiative will develop a Flood Action Card, offer flood preparedness training, and improve emergency response capabilities. The project also aims to upgrade the Bunbartha Recreation Reserve into a Community Hub for emergency support and respite, enhance resource storage with a shipping container, and equip the community with essential disaster response tools.



### Medium term goals

The medium-term goals of the project include building the capacity and capability of individuals by hosting a range of courses. Additionally, a formal request will be made to GMWater, seeking permission to sandbag low spots of the levee when moderate floods or higher are anticipated, further strengthening flood preparedness.



### Long term goal

Enhance the facilities at the Bunbartha Recreation Reserve to support its use as a Community Hub.



# Key Issues & vulnerabilities

## Key issues & vulnerabilities

- Medlands estate is a close-knit community of lifestyle and hobby farm blocks, accessible by a single entry and exit point.
- The Loch Garry flood regulator is a structure that provides flood protection for downstream landowners in the Bunbartha/Deep Creek area from minor to moderate flooding.
  - Built in 1925 at Bunbartha, the regulator is a 48 bay structure which contains 506 drop bars that can be removed or replaced during operation.
  - There is also 9km of levee that forms part of the Loch Garry Flood Protection District.
  - Loch Garry Flood Protection District Revised Operating Rules (June 2023) should be reviewed by all residents
- Potential closure of the Barmah-Shepparton Rd due to flooding.
- Bunbartha does not have a local CFA brigade, the closest is Tallygaroopna Fire Brigade who provide local emergency response for fire, flood and accidents.
- Bunbartha does not have a local VicSES Unit, the closest unit is the Shepparton Search and Rescue squad located in Shepparton.







# 7

# Values

“We support each other, we just need the tools to help out more.”

“We value our community.”

“Community gatherings are valuable.”

“We value the Bunbartha Recreation Reserve as a central point of Bunbartha.”

# SHORT TERM OBJECTIVES

| Action  | Lead | Support | Due By | Complete | Comments |
|---|------|---------|--------|----------|----------|
| Proposal to seek the establishment of the group as the Bunbartha Emergency Group and submit a formal request to the Bunbartha Tennis Club Committee to recognise it as a sub-committee.   |      |         |        |          |          |
| Develop a community directory that outlines skills and equipment of the Bunbartha community   |      |         |        |          |          |
| Establish a phone tree  |      |         |        |          |          |
| How to sandbag effectively  |      |         |        |          |          |
| What you can and can't do before, during and after a flood  |      |         |        |          |          |
| Develop a Flood Action Card that includes: <ul style="list-style-type: none"><li>. flood triggers</li><li>. state priorities</li><li>. Council 24/7 phone number</li><li>. community actions</li><li>. establishment of flood lookouts similar to flood warden role</li><li>. map with location of levees</li><li>. a list and map of what areas flood first within the community</li></ul> |      |         |        |          |          |



# SHORT TERM OBJECTIVES

| Action   | Lead | Support | Due By | Complete | Comments |
|--|------|---------|--------|----------|----------|
| Enhance the facilities at the Bunbartha Recreation Reserve to enable the centre to be used as a Community Hub that could be opened by the community when safe after an emergency or for community respite to heat<br>. Purchase a generator<br>. Purchase another water tank (22,000 litres)<br>. First Aid Kit/Snake kit<br>. Steel scoops to assist with filling sandbags<br>. Electronic sign to announce when the hub is open<br>provide preparedness messages |      |         |        |          |          |
| Develop a community hub model to fit community requirements (triggers to open, roles and role descriptions, services etc)  |      |         |        |          |          |
| To increase preparedness to all hazards, by purchasing a shipping container to hold the following:<br>. plastic pallets (to stack sandbags)<br>. sand bags<br>. community hub items<br>. install posters on how to correctly fill sandbags   |      |         |        |          |          |
| Enhance community communication by developing a Whats App group  |      |         |        |          |          |
|  |      |         |        |          |          |

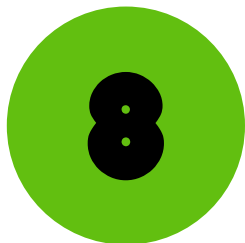
# MEDIUM TERM OBJECTIVES

| Action  | Lead | Support | Due By | Complete | Comments |
|---|------|---------|--------|----------|----------|
| First Aid training  |      |         |        |          |          |
| Chainsaw training   |      |         |        |          |          |
| Mental health first aid training  |      |         |        |          |          |
| Grant writing course  |      |         |        |          |          |
| Write to GMWater asking permission to sandbag the low spots of the levee when advised of a moderate flood or above. |      |         |        |          |          |
|   |      |         |        |          |          |
|   |      |         |        |          |          |
|   |      |         |        |          |          |
|   |      |         |        |          |          |



# LONG TERM OBJECTIVES

| Action   | Lead | Support | Due By | Complete | Comments |
|--|------|---------|--------|----------|----------|
| Upgrade the Bunbartha Recreation Reserve kitchen to a commercial kitchen |      |         |        |          |          |
|  |      |         |        |          |          |
|  |      |         |        |          |          |
|  |      |         |        |          |          |
|  |      |         |        |          |          |



# Emergency Contacts

| Agency                          | Phone Number  | Website   |
|---------------------------------|---------------|---|
| Triple 000                      | 000           |   |
| VicEmergency                    | 1800 226 226  | <a href="https://emergency.vic.gov.au">emergency.vic.gov.au</a>                 |
| VicSES                          | 132 500       | <a href="https://ses.vic.gov.au">ses.vic.gov.au</a>                             |
| CFA                             |               | <a href="https://cfa.vic.gov.au">cfa.vic.gov.au</a>                             |
| VicTraffic                      |               | <a href="https://traffic.transport.vic.gov.au">traffic.transport.vic.gov.au</a> |
| Police but not the sirens       | 131 444       |   |
| Bureau of Meterology            |               | <a href="https://bom.gov.au">bom.gov.au</a>                                     |
| Powercor Outages                | 13 24 12      |   |
| Poisons Information Line        | 13 11 26      |   |
| Nurse on Call                   | 1300 60 60 24 |   |
| Better Health Channel           |               | <a href="https://betterhealth.vic.gov.au">betterhealth.vic.gov.au</a>           |
| Greater Shepparton City Council | 5832 9700     | <a href="https://greatersepparton.com.au">greatersepparton.com.au</a>           |





# Bunbartha Emergency Group

The Bunbartha Emergency Group was established in 2025 and consists of the following members:

| Members | Members |
|---------|---------|
| Mat     | Barb    |
| John    | Kevin   |
| Ross    | Shaun   |
| Rhonda  | Adam    |
| Mick    | Tom     |
| Albert  | Naomi   |

**The Bunbartha Emergency Group welcomes new members.**

