



# City of Greater Shepparton Family and Children's Services Directory

A guide to services for families with  
children aged up to 12 years



# EMERGENCY NUMBERS

<b>Police</b>	<b>000</b>
<b>Fire Brigade</b>	<b>000</b>
<b>Ambulance</b>	<b>000</b>
<b>Shepparton Police (General Enquiries)</b>	<b>5820 5777</b>
<b>Poisons Information Centre</b>	<b>131 126</b>
<b>Hospital</b> Goulburn Valley Health Graham Street, Shepparton	<b>5832 2322</b>
<b>Interpreter Service</b>	<b>131 450</b>
<b>VincentCare Victoria</b>	<b>1800 825 955</b>
<b>Nurse On Call</b>	<b>1300 606 024</b>
<b>National Home Doctor Service</b>	<b>137 425</b>

# USEFUL WEBSITES

**You may find useful and relevant information at the following websites**

**Department of Education**

[www.education.vic.gov.au](http://www.education.vic.gov.au)

**Department of Health**

[www.health.vic.gov.au](http://www.health.vic.gov.au)

**Department of Families, Fairness and Housing**

[www.dffh.vic.gov.au](http://www.dffh.vic.gov.au)

**Better Health Channel**

[www.betterhealth.vic.gov.au](http://www.betterhealth.vic.gov.au)

**Parenting Research Centre**

[www.parentingrc.org.au](http://www.parentingrc.org.au)

**Greater Shepparton City Council**

[www.greatershepparton.com.au](http://www.greatershepparton.com.au)

**Australian Breastfeeding Association**

[www.breastfeeding.asn.au](http://www.breastfeeding.asn.au)

**Post and Ante Natal Depression – PANDA**

[www.panda.org.au](http://www.panda.org.au)

**Immunise Australia**

[www.immunise.health.gov.au](http://www.immunise.health.gov.au)

**Raising Children Network**

[www.raisingchildren.net.au](http://www.raisingchildren.net.au)



# CONTENTS

Aboriginal Services.....	<b>9</b>
Accommodation and Housing .....	<b>10</b>
Advice, Counselling and Referral.....	<b>13</b>
Breastfeeding Support.....	<b>19</b>
Child Care Centres .....	<b>21</b>
Child Protection and Family Violence Services .....	<b>28</b>
Disability and Special Needs Information and Services.....	<b>31</b>
Ethnic Specific Services.....	<b>35</b>
Family and Parent Support Services.....	<b>37</b>
Financial Assistance and Counselling.....	<b>42</b>
Health Services.....	<b>44</b>
Immunisation.....	<b>46</b>
Legal Services.....	<b>47</b>
Leisure and Recreational Activities .....	<b>49</b>
Library and Toy Library Services.....	<b>50</b>
Maternal and Child Health Service.....	<b>53</b>
Neighbourhood/Community Houses.....	<b>55</b>
Playgroups.....	<b>57</b>
Kindergarten Services .....	<b>59</b>
Primary Schools.....	<b>63</b>





# INTRODUCTION

The Greater Shepparton municipality was created in 1994 as a result of local government amalgamations. It covers an area of 2,427 km<sup>2</sup> and has an estimated population of 66,000, of which almost 8,000 are aged 0 to 8 years.

The Greater Shepparton population reflects diverse ethnicity with the major non-Australian born groups being Italian, Greek, Turkish, Macedonian, Albanian and Iraqi. Greater Shepparton also has the highest non-metropolitan Aboriginal population in Victoria.

---

## **Greater Shepparton City Council**

The Early Years Department at the Greater Shepparton City Council offers a range of services to cater for families in the area, including long day care, kindergartens, MCH and playgroups. Staff can provide information on other child and family services available in Greater Shepparton. Councils Customer Service Department has a focus on being a 'one stop' shop, with the Customer Service team dealing with general enquiries and information.

📍 90 Welsford Street Shepparton, 3630

☎ 03 5832 9700

✉ [council@shepparton.vic.gov.au](mailto:council@shepparton.vic.gov.au)

🌐 [www.greatershepparton.com.au](http://www.greatershepparton.com.au)

## **Acknowledgement to Traditional Owners**

We, Greater Shepparton City Council, acknowledge the Yorta Yorta Peoples of the land which now comprises Greater Shepparton, we pay our respect to their tribal elders, we celebrate their continuing culture and we acknowledge the memory of their ancestors.







# ABORIGINAL SERVICES

## **Rumbalara Aboriginal Cooperative**

Rumbalara Aboriginal Cooperative has been operating for over 35 years and provides a wide range of services to the Aboriginal community including Youth and Family services, Health services, Housing, and Capital Works and Aged Care and Disability Services.

- 📍 20 Rumbalara Road, Mooroopna, 3629
  - ☎ 5820 0000
  - 🌐 [www.rumbalara.org.au](http://www.rumbalara.org.au)
- 

## **Lulla's Children & Family Centre**

Lulla's is a long day care centre, also providing funded year before school kindergarten, pre-kindergarten and play group

- 📍 44 Edward Street, Shepparton, 3630
  - ☎ 03 4800 5295
  - 🌐 [www.lullas.com.au](http://www.lullas.com.au)
- 

## **Goulburn Valley Health Hospital Aboriginal Liaison Officer**

The Aboriginal Liaison Officer provides information and support to Aboriginal and Torres Strait Islander hospital patients and their families. The Aboriginal Liaison Officer advocates and liaises on behalf of the patients and their families.

### **Goulburn Valley Health**

- 📍 Graham Street Shepparton, 3630
- ☎ 03 5832 2450
- 🌐 [www.gvhealth.org.au](http://www.gvhealth.org.au)

# ACCOMMODATION AND HOUSING

## **Pathways Accommodation and Support Program**

Pathways provides a range of services and programs for disadvantaged and marginalised families, single adults, families experiencing financial difficulty or needing professional support, the homeless and those at risk of homelessness. Pathways can provide outreach services for families needing ongoing support and assistance.

### **The Salvation Army (Pathways)**

📍 27 Wyndham Street, Shepparton, 3630  
☎ 03 5820 8000  
🌐 [www.salvationarmy.org](http://www.salvationarmy.org)

---

## **Beyond Housing (Previously Rural Housing Network)**

Beyond Housing is a community housing agency which operates across the Hume region. The agency provides assistance to people who are 'homeless or at risk of homelessness'. The service includes financial assistance, traditional housing, advocacy and assistance with both public and private housing applications. This service is free and available to all Hume region residents.

📍 49 Stewart Street, Shepparton, 3630  
☎ 03 5833 1000

---

## **Department of Families, Fairness and Housing**

The Department of Families, Fairness and Housing (DFFH) works hard to create equal opportunities for all Victorians to live a safe, respected and valued life. Our areas of focus are child protection, housing, disability, the prevention of family violence, multicultural affairs, LGBTIQ+ equality, veterans, women and youth.

📍 163 Welsford Street, Shepparton, 3630  
☎ 1300 360 452







# ADVICE, COUNSELLING AND REFERRAL

## **The Orange Door**

Help for people who are experiencing family violence or who need support with care and wellbeing of children.

Child FIRST are now located with The Orange Door

📍 210 Corio Street Shepparton, 3630

☎ 1800 634 245

---

## **Telephone Crisis and Counselling Service**

### **Lifeline**

24 hour crisis counselling service.

☎ 131 114

🕒 24 Hours

---

## **Post and Ante Natal Depression Association (PANDA)**

Support line open Monday to Friday. For assistance afterhours please call Lifeline, Parentline or the Maternal and Child Health Line.

☎ 1300 726 306

---

## **Parentline**

Information and advice service for parents and caregivers of children from birth to 18 years of age available every day.

☎ 1300 301 300

---

## **Mensline Australia**

A dedicated service for men with relationship and family concerns.

☎ 1300 789 978

---



### **Kids helpline**

Kids Helpline is a free Australian telephone and online counselling serviced for young people aged between 5 and 25.

☎ 1800 55 1800

---

### **Uniting**

#### **Care Ring**

CareRing provides an extensive range of financial support services through a centralised, co-ordinated point of contact.

📍 136 Maude St Shepparton, 3630

☎ 5831 6157

---

### **Kids Help Line**

24 Hour counselling service for children and young people.

☎ 1800 55 1800

🕒 24 Hours

---

### **Safe Steps Family Violence Response Centre**

24 Hour counselling service.

☎ 1800 015 188

🕒 24 Hours

### **Women's Information and Referral Exchange (W.I.R.E)**

W.I.R.E offers a free information and referral service for all Victorian women no matter what the issue

☎ 1300 134 130

---

### **Maternal and Child Health Line**

After hours advice and support line.

☎ 132 229

Telephone Interpreter Service

☎ 131 450

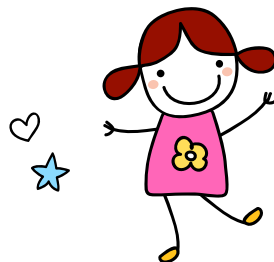
🕒 24 Hours

---

### **Tenants Victoria**

Free call service

☎ 03 9416 2577







### **Goulburn Valley Pregnancy and Family Support Service**

Goulburn Valley Pregnancy Support provides a community-based service to pregnant women and/or families with children 0-6 years. Telephone and face-to-face is offered.

📍 15A St. Andrews Road Shepparton, 3630

☎ 03 5821 0826

🕒 By appointment only

---

### **GVCASA: Goulburn Valley Centre Against Sexual Assault**

📍 130 Nixon St Shepparton, 3630

☎ 5831 2343

☎ 1800 112 343





# BREASTFEEDING SUPPORT

## **Goulburn Valley Health Breastfeeding Support and Service**

This service offers mothers support and advice relating to breastfeeding of their baby and settling techniques staffed by qualified lactation consultants.

📍 20 Monash Street, Shepparton, 3630  
03 4804 4940

---

## **Australian Breastfeeding Association**

The Shepparton Group for the Australian Breastfeeding Association (ABA) offers counselling, community education, electric breast pump hire, and breastfeeding resources for loan. For more information about the group visit [www.facebook.com/ABAShepparton](http://www.facebook.com/ABAShepparton).

☎ 1800 686 268  
🕒 24 Hours

---

## **Maternal and Child Health**

Your local Maternal and Child Health nurse can also provide breast feeding advice and support. Look under the Maternal and Child Health section of this directory to find the centre closest to you.

## **Greater Shepparton City Council**

☎ 03 5832 9312  
🌐 [greater-shepparton.com.au](http://greater-shepparton.com.au)

---

## **Parent Child Program**

The Parent Child Program provided through FamilyCare is a free service to help parents with children from newborn to 4 years old. The service offers assistance with breastfeeding, bottle feeding, food refusal, weaning, returning to work, settling issues, sleep disturbance, routines and behaviour management.

## **Parent Child Program**

📍 19 Welsford Street Shepparton, 3630  
☎ 03 5823 7000



# CHILD CARE CENTRES

## Long Day Care (Council Operated)

### Arthur Dickmann Children's Centre

📍 104-106 Maude Street Shepparton, 3630

☎ 03 5821 3880

### Frank R. Pullar Children's Centre

📍 168 Echuca Road Mooroopna, 3629

☎ 03 5832 5190

### Nancy Vibert Children's Centre

📍 18 Edward Street Shepparton, 3630

☎ 03 5832 9560

### Mooroopna Children and Families Centre

📍 16-18 O'Brien Street Mooroopna, 3629

☎ 03 5832 5170



## Long Day Care (Community Managed)

### Kialla Children's Centre

📍 Reserve Street Kialla, 3631

☎ 03 5823 2746

### Lulla's Children & Family Centre

📍 44 Edwards Street Shepparton, 3630

☎ 03 4800 5295

### Tatura Children's Centre

📍 5-9 Kerferd Street Tatura, 3616

☎ 03 5824 1415

---

## Long Day Care (Privately Operated)

### Apple Blossom Early Learning

📍 21 Ann Street Mooropna, 3629

☎ 03 5825 3933

### Balaclava Road Childcare Centre

📍 205 Balaclava Road Shepparton, 3630

☎ 03 5821 0396

### Busy Bees

📍 2 - 10 St Georges Road Shepparton, 3630

☎ 03 5849 1655

### Community Kids Shepparton

📍 122 Graham Street Shepparton, 3630

☎ 03 5821 7511

### Good Start Early Learning

📍 49-51 Bouchier Street Shepparton, 3630

☎ 03 5831 6465

### Good Start Early Learning

📍 132-134 Archer Street Shepparton, 3630

☎ 03 5822 2830

**Guthrie Street Childcare Centre**

📍 52 Guthrie Street Shepparton, 3630

☎ 03 5821 1711

**Inspira Kids**

📍 24 Riverview Drive, Kialla, 3631

☎ 03 5897 7167

**Knight Street Multi-Age Learning**

📍 164 Knight Street Shepparton, 3630

☎ 03 5831 8911

**Little Stars Florina Child Care and Kindergarten**

📍 Cnr Hawdon and Knight Street Shepparton, 3630

☎ 03 5821 7805

**Wyndham Early Learning**

📍 617 Wyndham St Shepparton, 3630

☎ 03 5822 2372







### **Occasional Care (Council Operated)**

#### **Nancy Vibert Children's Centre**

📍 18 Edward Street Shepparton, 3630

☎ 03 5832 9560

#### **Tallygaroopna Occasional Care**

📍 33 Victoria Street Tallygaroopna, 3634

☎ 03 5829 8274

#### **Katandra West Occasional Care**

📍 33 Bankin Street Katandra West, 3634

☎ 03 5832 5252

---

### **Occasional Care (Community Managed)**

#### **Tatura Community House and Occasional Care**

📍 12-16 Casey Street Tatura, 3616

☎ 03 5824 1315



### **Vacation Care Program**

A number of Vacation Care programs run throughout the Greater Shepparton municipality. Vacation Care is specifically designed for primary school aged children, aged between 5 and 12 for care during the school holidays. For further information relating to the current programs contact your local primary school or community house.

---

### **Department of Education**

If parents have concerns regarding the health, safety or wellbeing of any child within any children's service they can contact the Department of Education and speak to the Children Service's Advisor.

📍 180 High Street Shepparton, 3630

☎ 1300 333 231



# CHILD PROTECTION AND FAMILY VIOLENCE SERVICES

## **Centre Against Sexual Assault (CASA)**

CASA provides a free and confidential service for victims/survivors of sexual assault to help them overcome the trauma of assault and its consequences.

📍 130 Nixon Street Shepparton, 3630

☎ 03 5831 2343

---

## **DFFH Child Protection Service**

📍 163-167 Welsford Street Shepparton, 3630

☎ Central Intake: 1300 360 452

---

## **Child Protection After Hours Service**

Monday - Friday

☎ 131 278

---

## **Marian Community - VincentCare**

Marion Community provides a support service for women and children affected by family violence. It supports women and children to gain access to practical assistance, services and information in order to establish a life free of violence.

📍 144 Welsford Street Shepparton, 3630

☎ 03 5825 9400

After hours: 1800 015 188

---

## **Parentline**

Provides a telephone counselling service for parents and carers of children from birth to 18 years old.

☎ 132 289

---

### **Relationships Australia**

Offers group programs for men and women over an 8 week period. Focus is on attitudinal and behavioural changes as well as recovery from family violence.

📍 634 Wyndham Street Shepparton, 3630

☎ 03 5820 7444

---

### **Victorian Police Sexual Offence and Child Abuse Unit**

The unit deals with investigation of adult sexual assault and child physical and sexual abuse. The police officers are experienced in welfare and family problems.

📍 155 Welsford Street Shepparton, 3630

☎ 03 5820 5777

---

### **The Orange Door**

The Orange Door is a free service for adults, children and young people who are experiencing or have experienced family violence and families who need extra support with the care of children.

You should contact The Orange Door if:

- someone close to you is hurting you, controlling you or making you feel afraid – such as your partner, family member, carer or parent(s)
- you are a child or young person who doesn't have what you need to be OK
- you are worried about the safety of a friend or family member
- you need more support with the care of children, e.g. due to money issues, illness, addiction, grief, isolation or conflict
- you are worried about the safety of a child or young person
- you need help to change your behaviour and stop using violence in your relationships

📍 210 Corio Street Shepparton, 3630

☎ 1800 634 245

🌐 [www.orangedoor.vic.gov.au](http://www.orangedoor.vic.gov.au)



# DISABILITY AND SPECIAL NEEDS INFORMATION AND SERVICES

## **Australian Hearing Shepparton**

Provides Government funded hearing care to pensioners, most DVA beneficiaries and children under 21 years of age.

📍 205 Fryers Street Shepparton, 3630

☎ 134 432

---

## **Autism Victoria - Amaze**

Autism Victoria is the first place to call for information and advice for anyone wanting to find out more about the disorder. The Autism Victoria Family Support Service and Autism Victoria Advice Information Service provides timely specialist support and advice for families caring for a child or adult with an Autism Spectrum Disorder.

☎ 1800 308 699

---

## **FamilyCare**

Assisting carers of people who have disabilities, aged care issues, mental health problems or chronic illness with access to respite (in home and residential) and other appropriate services.

📍 19 Welsford Street Shepparton, 3630

☎ 03 5823 7000

---

## **Deaf VICTORIA**

This service offers information, advocacy and community education for deaf and hard of hearing members of the Hume Region, their friends and carers.

☎ 03 9917 4886

---

## **SPELD Victoria**

An association of parents and professional people interested in children and adults with specific learning difficulties. Offers Learning Difficulty Assessments, Intervention Services and Training.

☎ 03 9480 4422

### **Goulburn Valley Health Community Interlink Programs**

Flexible Care Packages - the goal of this program is to strengthen the capabilities of families to take care of their family member with a disability at home. The program is available to the families and carers of people with a disability between the ages of 0 to 64. Early Intervention Specialist Support Initiative (EISSI) – provides a range of Early Intervention services to children who have a developmental delay or disability, assisting their families to enhance their child’s development and education. EISSI services are available to families of children aged from birth to 6 years.

📍 121-135 Corio Street Shepparton, 3630

☎ 1300 203 203

---

### **Inspired Carers**

This group provides support, information, referral, social support and education for families and the wider community. A recreation and leisure program also runs for school aged brothers and sisters of children with additional needs.

📍 38 Packham Street Shepparton, 3630

☎ 03 5831 7157

---

### **Rights Information and Advocacy Centre Incorporated**

The Regional Information and Advocacy Council is an independent advocacy service for people with disabilities.

☎ 03 5222 5499





### **Royal Children's Hospital's Learning Difficulties Clinic**

The Learning Difficulties clinic at the Centre for Community Child Health supports primary school aged children with learning difficulties.

📍 Flemington Road Melbourne, 3000

☎ 03 9345 6180

---

### **DFFH Respite Care**

The Department of Families, Fairness and Housing Children's Respite Program offers short term respite for families and carers with a child aged 0 to 18 years with an intellectual disability.

☎ 1300 360 452

---

### **Berry Street**

Berry Street - Hume Region offers an Integrated Home Based Care Program which includes services such as General Foster Care (including emergency, respite, short term care and reception care) and Shared Family Care for children with a disability.

📍 110 Wyndham Street Shepparton, 3630

☎ 03 5822 8100

### **Scope Early Years Development Program**

This program recognises that some children require additional support in their kindergarten year and aims to find the most appropriate service for you and your family.

📍 7961 GV Highway, Kialla 3631

☎ 1300 472 673

---

### **Community Accessibility**

A volunteer supported community service that provides transport to local residents who are not able to access other forms of transport.

☎ 1300 704 530

---

### **Verney Road School**

This school provides educational programs to meet the needs of students with mild to profound intellectual and/or multiple disabilities, aged 2 years and 8 months to 18 years.

📍 2 Verney Road Shepparton, 3630

☎ 03 5821 8185

# ETHNIC SPECIFIC SERVICES

## **Ethnic Council of Shepparton and District**

The Ethnic Council is a non-profit community based service and is responsive to the expressed needs of culturally and linguistically diverse groups in the area. The Ethnic Council also advocates for the appropriate community and government development of service provision and change.

📍 158 Welsford Street Shepparton, 3630  
☎ 03 5831 2395

---

## **Interpreting Service**

The Department of Immigration and Citizenship (DIAC) provides the TIS National interpreting service for people who do not speak English and for the English speakers who need to communicate with them. TIS National has access to over 1300 contracted interpreters across Australia, speaking more than 120 languages and dialects. TIS National is available 24 hours a day, seven days a week for any person or organisation in Australia requiring interpreting service. To use an interpreter over the telephone please call 131 450.

🌐 [tisnational.gov.au](http://tisnational.gov.au)

---

## **Uniting**

Provides a range of services and programs to support new arrivals, refugees and people from a culturally and linguistically diverse background.

📍 134-140 Maude Street, Shepparton  
☎ 5831 6157





# FAMILY AND PARENT SUPPORT SERVICES

## **Centacare**

Centacare is a family welfare agency providing services which are relevant and responsive to individuals, couples, families and groups. Centacare seeks to empower and maximise the potential of individuals, couples and families through a range of high quality professional services.

📍 68 Wyndham Street Shepparton, 3630  
☎ 314 699

---

## **OzChild Shepparton**

We are focused on providing support for children and young people in foster and kinship care and keeping families together where possible. This is done through the delivery of evidence-based programs and services aimed at strengthening and repairing relationships.

📍 56 High Street Shepparton, 3630  
☎ 03 5829 6503  
🌐 [ozchild.org.au](http://ozchild.org.au)



### **Greater Shepparton Lighthouse Project**

Greater Shepparton Lighthouse Project is a not for profit organisation, the wish is to see all young people realise their full potential and thrive from conception to career. Lighthouse is using an army of volunteers, data, collaboration, and system thinking to support children every step of their trajectory. Some of the early year's incentives are below.

 [gslp.com.au](http://gslp.com.au)

---


### **The Family Haven Mooroopna**

Parents and children can relax, engage with staff and volunteers, share a meal and connect with other parents. The focus is on play and fun. Parents can also be helped to access additional supports where required. The Family Haven also offer transport and are able to pick families and children up and drop them home.

The Family Haven provides a safe space where parents and carers and their children are welcomed with no referral or appointment.

### **Mooroopna Anglican Church**

 15-17 Young Street, Mooroopna

 Tuesday to Thursday from 9.30am - 3pm

 0428 736 961

## Primary Care Connect

Primary Care connect provides a variety of services that can assist in enhancing the family unit through addressing individual issues impacting upon the family. The Generalist Counselling Program provides counselling to both individuals and families, and is solution focused to address a range of issues including depression, anxiety, communication problems, motivation and lifestyle issues. The Parenting Education Program offers one to one consultations on parenting issues and has a large number of parenting related resources such as tip sheets, books and videos. Other services and programs include:

- Primary Health Program
- Drug and Alcohol support
- Financial Counselling
- Gamblers Help
- Needle Exchange
- Refugee Services
- Support Accommodation Program
- Parent Education
- Dietician

📍 399 Wyndham Street Shepparton, 3630

☎ 03 5823 3200

🌐 [primarycareconnect.com.au](http://primarycareconnect.com.au)



## Uniting

Uniting is a child-safe and child-friendly organisation that ensures children both feel safe and are safe, and valued. Uniting is committed to safeguarding children and young people from all forms of violence, abuse, maltreatment and neglect and ensuring our staff and volunteers act to promote and protect child safety and wellbeing.

📍 136-142 Maude Street Shepparton, 3630

☎ 03 5831 6157

🌐 [unitingvictas.org.au](http://unitingvictas.org.au)

---

## FamilyCare

FamilyCare recognises that being part of a family can be great whether you are just starting out with young children, experiencing living with adolescents for the first time or caring for an older person or someone with a disability. There are also times when it is not so great and downright challenging. FamilyCare provides a range of services that can assist families experiencing problems or difficulties to find their own solution. They can offer family counselling for individuals, couples, children or for the whole family. Specific programs include anger management for men, relationships and parenting, help in the home with managing children through various stages of life and family issues, day stay programs for infants and parents, recreational activities and host families to assist families who have a child with special needs, information and respite for carers.

📍 19 Welsford Street Shepparton, 3630

☎ 03 5823 7000

🌐 [familycare.net.au](http://familycare.net.au)

---

## Goulburn Valley Pregnancy Support and Family Services

Goulburn Valley Pregnancy and Family Support Services provide a listening ear and practical support services to meet the physical, psychological and social wellbeing of pregnant women, parents and their young children.

📍 15A St Andrews Road Shepparton, 3630

☎ 03 5821 0826

🕒 By appointment only



## Relationships Australia

Relationships Australia is a not for profit, community based organisation providing a range of services to individuals, couples, families and children. Services include counselling, relationship education, family violence prevention, primary dispute resolution for separated families and pre-marriage counselling.

📍 634 Wyndham Street Shepparton, 3630

☎ 03 5820 7444

🌐 [relationshipsaustralia.com.au](http://relationshipsaustralia.com.au)

---

## The Bridge

The Bridge Youth Service is a key agency in the Goulburn Valley working with and advocating for young people. The Bridge works with and supports young people and their families with a particular focus on those from marginalised and/or disadvantaged backgrounds. However, our philosophy includes the provision of services to all young people. The Bridge offers a range of programs funded by government, private foundations and the local community. Programs focus on a diversity of issues and services include placement prevention, family reconciliation, family mediation, healthcare, creative arts and school support. For more information visit our website: [www.thebridge.org.au](http://www.thebridge.org.au)

The Bridge Youth Service aims to support the empowerment of young people, families and the community, through the provision of quality programs and services, flexibly delivered according to individual and community need. The Bridge is primarily a Youth Service; we also encourage parents, family members and carers of young people to contact us if assistance is required. Programs and services provided by The Bridge include:

- Youth Mentoring Program
- Youth Focused Antenatal Care and Education Program
- Parenting Support and Education
- Family Mediation and Reconciliation for Young Mothers
- After School Programs (Youthlinx)
- Housing and homelessness Support
- Youth Art and Music
- Relationship Help
- General Youth Support

📍 127 Welsford Street Shepparton, 3630

☎ 03 5831 2390

🌐 [thebridge.org.au](http://thebridge.org.au)

# FINANCIAL ASSISTANCE AND COUNSELLING

## **Marian Community**

Marion Community provides a support service for women and children affected by family violence. It supports women and children to gain access to practical assistance, services and information in order to establish a life free of violence. Address available upon request.

- 📍 144 Welsford Street Shepparton, 3630
- ☎ 5825 9400
- 🌐 [vincentcare.org.au](http://vincentcare.org.au)

---

## **Berry Street Saver Plus Program**

Saver Plus is a ten month financial literacy and matched savings program that assists people to build savings for their own or their children's education and in doing so strengthens their capacity to save. As part of the program, participants receive: one dollar in matched savings for every one dollar they save, up to \$500, for education costs; MoneyMinded financial training; and personal support and guidance from a trusted community organisation. At the end of the program participants use their matched savings to purchase an education-related goal, which can include items like school uniforms, computers, and text books.

- 📍 110 Wyndham St, Shepparton, 3630
- ☎ 03 5822 8100
- 🌐 [berrystreet.org.au](http://berrystreet.org.au)



### **Primary Care Connect Financial Counselling Service**

This is a free service providing counselling to community members who are experiencing financial difficulty. The service provides options for resolving debt issues and acts as advocate with creditors and their agents. Counsellors provide options to client to resolve their immediate problem whilst also offering longer term advice to minimise and potentially avoid further problems. The service has extensive links to other support agencies and will make appropriate referrals as required.

📍 399 Wyndham St, Shepparton, 3630  
☎ 03 5823 3200

---

### **Centrelink**

Centrelink offers a range of services for individuals and families and can provide helpful and informative advice.

### **Department of Families, Fairness and Housing Children's Respite**

📍 163 Welsford Street, Shepparton, 3630  
☎ 5832 1500  
🌐 [servicesaustralia.gov.au](http://servicesaustralia.gov.au)

# HEALTH SERVICES

## **Greater Shepparton City Council Environmental Health Department**

Great Shepparton City Council's Health Services department provide advice and assistance on a range of health related issues including:

- Prevention of infectious diseases
- Immunisation
- Head lice

📍 90 Welsford Street Shepparton, 3630

☎ 03 5832 9700

🌐 [greatershepparton.com.au](http://greatershepparton.com.au)

---

## **Primary Care Connect**

Primary Care Connect offers a variety of services and programs that aim to enhance and promote the health and wellbeing of individuals, families and the community, while preventing illness, disease and injury. Primary Care Connect is open to all members of the community and offers services and programs on and off site. They have GP's and a Podiatrist.

📍 399 Wyndham St Shepparton, 3630

☎ 03 5832 3200

🌐 [primarycareconnect.com.au](http://primarycareconnect.com.au)

---

## **Goulburn Valley Health**

Regional Public Hospital

📍 Graham Street Shepparton, 3630

☎ 03 5832 2322

🌐 [gvhealth.org.au](http://gvhealth.org.au)

---

## **Nurse on call**

Free, professional health advice, 24hrs a day.

☎ 1300 606 024

---

## **13Sick National Home Doctor**

As home visiting doctors we treat all kinds of patients, with all kinds of injuries and illnesses. It may be after work, or late at night, or on the weekend. Any time, in fact, that General Practices are closed, and you urgently need to see a doctor.

☎ 137 425



# IMMUNISATION

## **Immunisation**

The Greater Shepparton City Council's Environmental Health Department provides a regular immunisation services in various locations around Great Shepparton. For more information or for an immunisation timetable contact Environmental Health on

☎ 03 5832 9700

---

## **No Jab, No Play**

Under the No Jab, No Play legislation, before enrolling a child, early childhood services must obtain evidence that the child is:

- Fully immunised for their age; or
- On a recognised vaccination catch up program; or
- Unable to be fully immunised for medical reasons.



# LEGAL SERVICES

## **Victorian Legal Aid**

Victoria Legal Aid (VLA) is a government-funded agency set up to ensure that people who cannot afford to pay for a private lawyer can get help with their legal problems. Victorian Legal Aid provides free legal information for all Victorians; provides lawyers on duty in most courts and tribunals in Victoria; and funds legal representation for people who meet its eligibility criteria. Victorian Legal Aid can help people with a range of legal problems, including criminal matters, family breakdown, family violence, mental health and discrimination.

📍 1320-322 Wyndham Street Shepparton, 3630

☎ 03 5823 6200

🌐 [legalaid.vic.gov.au](http://legalaid.vic.gov.au)

---

## **Goulburn Valley Community Legal Centre**

Goulburn Valley Community Legal Centre is a free generalist legal service providing information, advice and therapeutic casework assistance to disadvantaged and vulnerable residents of the Goulburn Valley.

📍 11/1 High Street Shepparton 3630

☎ 03 5831 0900

🌐 [arcjustice.org.au](http://arcjustice.org.au)









# LEISURE AND RECREATIONAL ACTIVITIES

## **Leisure and Aquatic Centres**

These centres offer a number of fitness, sporting and recreational activities for the community and offer an extensive range of programs for children and adults. You can visit the Greater Shepparton City Council's website at [www.greatershepparton.com.au](http://www.greatershepparton.com.au) and follow the links.

---

## **Walks and Bicycle Tracks**

Greater Shepparton has an extensive shared path network for the whole family to enjoy the outdoors and surrounding environment while benefiting from some exercise. For more information about Greater Shepparton's Shared Path Network visit [www.getmoovingshepparton.com.au](http://www.getmoovingshepparton.com.au).

---

## **Parks and Gardens**

Enjoying the outdoors is made easy in Greater Shepparton with a variety of outdoor facilities to enjoy. With an abundant number of parks, reserves and gardens in the area - many with walking tracks, BBQ facilities, toilets and playgrounds - you and your family can enjoy a leisurely day out while taking in the natural environment Greater Shepparton has to offer. Further information can be obtained by visiting [www.greatershepparton.com.au](http://www.greatershepparton.com.au)

# LIBRARY AND TOY LIBRARY SERVICES

## **SPC Ardmona KidsTown**

Looking for a family outing, a unique children's playground that keeps the kids amused, parents relaxed and won't break the budget? Make your way to SPC Ardmona KidsTown, located on the Peter Ross Edwards Causeway (between Shepparton and Mooroopna). SPC Ardmona KidsTown Adventure Playground boasts play equipment and features that challenge, capture the imagination, thrill and allow for creative and imaginative play. For further information phone 03 5831 4213 or visit the KidsTown website at [www.kidstown.org.au](http://www.kidstown.org.au).

## **S-CAPE Regional Skate Park**

Greater Shepparton's regional skate park has become one of the most popular and well used facilities for young people in the region. The skate park is located on the foreshore of the Victoria Park Lake. There are large areas of open space where families can relax and enjoy the surroundings, while watching the skaters and bikers in action.



## Public libraries

Goulburn Valley Regional Library Corporation provides a range of library services for children and adults in the Greater Shepparton area. Membership to the public library is free and the following services are open to all residents:

- Access to information - reference books, newspapers, magazines, family history resources.
- Involvement - join in activities such as Storytime, author visits and Friends of the Library.
- Computers - surf the internet, email or use the word processors.
- Escape - books for children and adults including large prints.
- Entertainment - videos, DVD's, CD's, books and tapes.

A Mobile Library Services also operates, providing a library service to smaller communities in the Greater Shepparton area. For a complete timetable for the Mobile Library and Branch Library open hours contact any of the branches listed below.

### **Mooroopna Library**

📍 Morrell St, Mooroopna

☎ 1300 374 765.

### **Shepparton Library**

📍 41-42 Marungi Street, Shepparton 3630

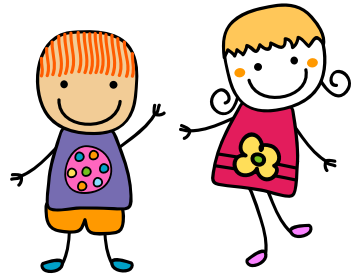
☎ 1300 374 765.

### **Tatura Library**

📍 12-16 Casey Street, Tatura

☎ 1300 374 765.





### **Storytime**

Baby Rhyme Time, Rhyme & Story Time is offered at a number of local libraries and is suitable for children aged 0-6 years of age. The sessions are free and include several stories followed by discussion time, a craft activity and rhymes. iTots is for ages 3-5 years and your child will discover apps and programs that educate and entertain. Share songs, stories, felt board fun and much more.

---

### **Toy Libraries**

Toy Libraries promote the importance of play in a child's development. Once you become a member of a Toy Library there are many wonderful toys suitable for children of all age groups you can borrow.

---

### **The Cubby Toy Library**

📍 Cnr Numurkah and Balaclava Road Shepparton, 3630

# MATERNAL AND CHILD HEALTH SERVICE

Soon after your baby is born, the hospital or midwife will contact the Maternal and Child Health Services (MCH). The Maternal and Child Nurse will contact you to let you know a time and date for them to visit you and your baby at home. After your home visit, regular follow up appointments will be made for you to visit one of Council's Maternal and Child Health centres (usually the centre closest to where you live). The Maternal and Child Health Service is a free service and is available to all families with children aged 0-6 years. The service aims to promote the health and wellbeing of children and provides information and support for:

- Breastfeeding
- Child health and development
- Maternal health and wellbeing, including postnatal depression
- Parent-child relationships
- Family Planning
- Nutrition
- Immunisation
- Parenting support and new parent groups
- Childhood illnesses.

On occasions the local Maternal and Child Health Nurse may refer families who are experiencing difficulties to the Enhanced Maternal and Child Health Service. This is also a free service. An after-hours Maternal and Child Health advice and support line is also available and can be contacted on 13 22 29. The Maternal and Child Health central administration number for all Greater Shepparton is 03 5832 9312. Contact this number for all Maternal and Child Health matters including appointments.

📍 90 Welsford Street, Shepparton (Central)  
☎ 03 5832 9312



**Arthur Dickmann MCH Service**

📍 104 - 106 Maude St  
Shepparton, 3630

**Balaclava Road MCH Service**

📍 205 Balaclava Road  
Shepparton, 3630

**Frank R Pullar MCH Service**

📍 168 Echuca Road  
Mooroopna, 3629

**Kialla Park MCH Service**

📍 18 Reserve Street  
Kialla, 3631

**Merrigum MCH Service**

📍 Waverley Avenue  
Merrigum, 3618

**Mooroopna Children's and Family  
Centre MCH Service**

📍 16-18 O'Brien Street  
Mooroopna, 3629

**Murchison MCH Service**

📍 38 Impey St  
Murchison, 3610

**Nth Hub MCH Service**

📍 10-14 Parkside Drive  
Shepparton, 3630

**Riverside Plaza MCH Service**

📍 Shop 21C, 8025 GV Highway  
Kialla, 3631

**Toolamba MCH Service**

📍 69-77 Wren St  
Toolamba, 3614

**Tatura MCH Service**

📍 12-16 Casey Street  
Tatura, 3616

**Westmorland Crescent MCH Service**

📍 13-15 Westmorland Crescent  
Shepparton, 3630



# NEIGHBOURHOOD/ COMMUNITY HOUSES

## Neighbourhood/Community Houses

Neighbourhood/Community Houses offer a range of services and programs to meet the needs of the local community. The houses are set in a welcoming and informal environment where adults and children can participate in a range of programs and activities. A more extensive list is available at [greatershepparton.com.au](http://greatershepparton.com.au).

- Parenting sessions
- Life skills sessions
- Relaxation and exercise programs
- Support groups
- Computer courses
- Art and craft activities for children and adults
- Occasional Child Care
- Referrals

Contact the individual houses/centres for more information and the services and programs on offer.

---

## Murchison and District Neighbourhood House

📍 38 Impey St Murchison, 3610  
☎ 03 5826 2373

---

## Mooroopna Education and Learning Centre

📍 23 Alexandra Street Mooroopna, 3629  
☎ 03 5825 1774

---

## North Shepparton Community and Learning Centre

📍 14 Parkside Drive Shepparton, 3630  
☎ 03 5821 5770

---

## South Shepparton Community Centre

📍 290 Archer Street Shepparton, 3630  
☎ 5821 6172

---

## Tatura Community House

📍 12-16 Casey street Tatura, 3616  
☎ 03 5824 1315





# PLAYGROUPS

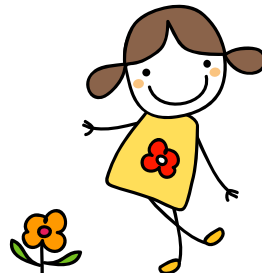
## Playgroups

Playgroups provide an opportunity for you and your child to meet and socialise with others and promote friendships, support, independence and learning. Playgroups usually offer a range of activities that you and your child can participate in including:

- Creative music
- Music and imaginative play
- Reading and other literacy play
- Craft activities

For more information on playgroups available in the local area or starting up a playgroup contact the Early Years Department on 03 5832 9700 or Playgroup Victoria on 03 9388 1599 or 1800 171 882.

For a list of the Playgroups that are available in Greater Shepparton, please visit [www.greatershepparton.com.au](http://www.greatershepparton.com.au)





# KINDERGARTEN SERVICES

Kindergarten allows your child to participate in a variety of activities that reflect their interests and skills, extend their knowledge of themselves and others, and help them to understand their environment. Kindergarten programs are delivered by qualified kindergarten teachers and are designed to increase a child's independence and develop a positive self-worth through furthering the social, emotional, cognitive, physical and language skills of children.

The Greater Shepparton City Council operates a central registration system for kindergartens in the municipality. Your child is eligible to attend a funded 4 year old program if they turn four years of age before 30 April in the year of attendance. Parents with children under this age can access 3 year old kindergarten. Children with additional needs can attend kindergartens. Their attendance is supported by kindergarten field officers and other specialist support.

More information on kindergarten enrolments can be obtained by contacting the Council's Early Years Services department on 03 5832 9700.

## Kindergarten Programs

The Victorian Government funds a range of services to provide a kindergarten program to support learning in the early years. Children learn through play based programs that are developed to meet their individual needs.

### 54 Reasons Kindergarten

📍 17 O'Brien St Mooroopna, 3629

☎ 03 5825 2924

### Apple Blossoms Early Learning

📍 21 Ann Street Mooroopna, 3629

☎ 03 5825 3933

### Arthur Dickmann Kindergarten

📍 104 Maude Street Shepparton, 3630

☎ 03 5821 3880

### Arthur Mawson Kindergarten

📍 134 Hayes Street Shepparton, 3630

☎ 03 5821 5110

### Balaclava Road Children's Centre

📍 205 Balaclava Road Shepparton, 3630

☎ 03 5821 0396

### Busy Bees

📍 2-10 St Georges Road

Shepparton, 3630

☎ 03 5849 1655

### Colliver Road Kindergarten

📍 21 Colliver Rd Shepparton, 3630

☎ 03 5821 5779

### Community Kids Early Education Centre

📍 122 Graham St Shepparton, 3630

☎ 1800 411 604

### Dolena Young Kindergarten

📍 135 Balaclava Road Shepparton, 3630

☎ 03 5821 3908

### **Frank R Pullar Kindergarten**

📍 168 Echuca Road Mooroopna, 3629  
☎ 03 5832 5190

### **Good Start Early Learning**

📍 49-51 Bouchier Street  
Shepparton, 3630  
☎ 03 5831 6465

### **Good Start Early Learning**

📍 132-134 Archer Street  
Shepparton, 3630  
☎ 03 5822 2830

### **Gowrie Park Preschool**

📍 35 Hughes Street Tatura, 3616  
☎ 03 5824 1602

### **Gowrie St Preschool**

📍 1-19 Gowrie Street Shepparton, 3630  
☎ 03 5821 9185

### **Guthrie St Childcare**

📍 52-54 Guthrie Street  
Shepparton, 3630  
☎ 03 5821 1711

### **Inspira Kids Early Learning Centre**

📍 24 Riverview Drive Kialla, 3631  
☎ 03 5897 7167

### **Isabel Pearce Kindergarten**

📍 506 Central Avenue  
Shepparton East, 3631  
☎ 03 5829 2369

### **Katandra West Kindergarten**

📍 33 Bankin Street Katandra West, 3634  
☎ 03 5828 3254

### **Kialla Children's Centre**

📍 18 Reserve Street Kialla, 3631  
☎ 03 5823 2746

### **Knight Street Multi-Age Learning**

📍 164 Knight Street Shepparton, 3630  
☎ 03 5831 8911

### **Leslie Gribble Kindergarten**

📍 13 Westmorland Crescent  
Shepparton, 3630  
☎ 03 5821 3980

### **Little Stars Florina Child Care and Kindergarten**

📍 195 Knight Street Shepparton, 3630  
☎ 03 5821 7805

### **Lulla's Children's & Family Centre**

📍 42 Harold Street Shepparton, 3630  
☎ 03 4800 5295

### **Merrigum Preschool**

📍 145 Waverly Avenue Merrigum, 3618  
☎ 03 5855 2467





**Mooroopna Primary School and  
Children's & Families Centre**

📍 16-18 O'Brien Street Mooroopna, 3929  
☎ 03 5832 5179

**Murchison Preschool**

📍 14 Watson Street Murchison, 3610  
☎ 03 5826 2485

**Nancy Vibert Kindergarten**

📍 18 Edward Street Shepparton, 3630  
☎ 03 5832 9560

**Patricia Smith Kindergarten**

📍 38 Packham Street Shepparton, 3630  
☎ 03 5821 6672

**Rodney Neighbourhood Steiner  
Kindergarten**

📍 5 Echuca Road Mooroopna, 3629  
☎ 03 5825 1200

**St Mel's Kindergarten**

📍 201 Archer Street Shepparton, 3630  
☎ 03 5821 9982

**Tallygaroopna Kindergarten**

📍 33 Victoria Street Tallygaroopna, 3634  
☎ 03 5829 8274

**Tatura Children's Centre**

📍 5-9 Kerford Street Tatura, 3616  
☎ 03 5824 1415

**Toolamba Kindergarten**

📍 Wren St Toolamba, 3614  
☎ 03 5826 5320

**Undera Kindergarten**

📍 45 Anderson Street Undera, 3629  
☎ 03 5826 0252

**Wyndham Early Learning**

📍 617 Wyndham Street  
Shepparton, 3630  
☎ 03 5822 2372



was  
weekend  
Wednesday  
we  
with

Gervale Primary School

# PRIMARY SCHOOLS

## Primary Schools

For a child to attend primary school they must have turned five years of age by 30 April of the year that they will be attending school. Local primary schools endeavour to support parents in a wide range of areas and are a valuable contact point for information about local services.

## Victorian Government Schools:

### Ardmona Primary School

📍 580 Turnbull Road  
Ardmona, 3629  
☎ 03 5829 0273

### Bourchier Street Primary School

📍 Bourchier Street  
Shepparton, 3630  
☎ 03 5821 3488

### Congupna Primary School

📍 3580 Katamatite/Shepparton  
Main Road Congupna, 3633  
☎ 03 5829 9286

### Currawa Primary School

📍 Dookie College Campus  
Dookie, 3646  
☎ 03 5828 6581

### Dhurringile Primary School

📍 605 Langham Road  
Dhurringile, 3610  
☎ 03 5826 6222

### Dookie Primary School

📍 Baldock Street  
Dookie, 3646  
☎ 03 5828 6585

### Gowrie Street Primary School

📍 1-19 Gowrie Street  
Shepparton, 3630  
☎ 03 5821 3100

### Grahamvale Primary School

📍 85 Grahamvale Primary School  
Grahamvale, 3631  
☎ 03 5821 4219

### Guthrie Street Primary School

📍 33 Guthrie Street  
Shepparton, 3630  
☎ 03 5821 1944

### Harston Primary School

📍 155 Harston Road  
Harston, 3616  
☎ 03 5854 8317

### Katandra West Primary School

📍 17-27 Bankin Street  
Katandra West, 3634  
☎ 03 5828 3350

### Kialla Central Primary School

📍 128 Central Road  
Kialla, 3631  
☎ 03 5827 1373

### Kialla West Primary School

📍 7370 Goulburn Valley Highway  
Kialla West, 3631  
☎ 03 5823 1333

### Lemnos Primary School

📍 Lemnos Road  
Lemnos, 3631  
☎ 03 5829 9287

**Merrigum Primary School**

📍 14 Judd Avenue  
Merrigum, 3618  
☎ 03 5855 2275

**Mooroopna North Primary School**

📍 835 Ardmona Road  
Mooroopna, 3629  
☎ 03 5829 0141

**Mooroopna Park Primary School**

📍 45 MacLissac Road  
Mooroopna, 3629  
☎ 03 5825 3856

**Mooroopna Primary School**

📍 16-18 O'Brien Street  
Mooroopna, 3629  
☎ 03 5825 2060

**Murchison Primary School**

📍 8-10 Impey Street  
Murchison, 3610  
☎ 03 5826 2391

**Orrvale Primary School**

📍 300 Channel Road  
Orrvale, 3631  
☎ 03 5829 2490

**Shepparton East Primary School**

📍 15 School Road  
Shepparton East, 3631  
☎ 03 5829 2426

**St Georges Road Primary School**

📍 120 St Georges Road  
Shepparton, 3630  
☎ 03 5821 3383

**Tallygaroopna Primary School**

📍 24-34 Victoria Street  
Tallygaroopna, 3634  
☎ 03 5829 8264

**Tatura Primary School**

📍 33 Service Street  
Tatura, 3616  
☎ 03 5824 1684

**Toolamba Primary School**

📍 69-77 Wren Stret  
Toolamba, 3614  
☎ 03 5826 5212

**Undera Primary School**

📍 45-55 Anderson Street  
Undera, 3629  
☎ 03 5826 0211

**Wilmot Road Primary School**

📍 84-90 Wilmot Road  
Shepparton, 3630  
☎ 03 5821 4953

**Zeerust Primary School**

📍 245 Zeerust Road  
Zeerust, 3634  
☎ 03 5829 8282



## Independent Schools

### All Saints Anglican School

📍 320 Verney Road  
Shepparton North, 3631

### Banmira Specialist School

📍 2 Verney Road Shepparton, 3630  
☎ 03 5821 8185

### Isik College

📍 685 New Dookie Road  
Shepparton, 3630  
☎ 03 5829 9852

### Shepparton Christian Community School

📍 155 Verney Road Shepparton, 3630  
☎ 03 5831 7790

## Catholic Schools

### Sacred Heart Primary School

📍 69 Hogan Street  
Tatura, 3616  
☎ 03 5824 1841

### St Anne's College

📍 72 Wendouree Dr Kialla, 3631  
☎ 03 4812 2993

### St Brendan's Primary School

📍 143-149 Knight Street  
Shepparton, 3630  
☎ 03 5821 1926

### St Luke's Catholic Primary School

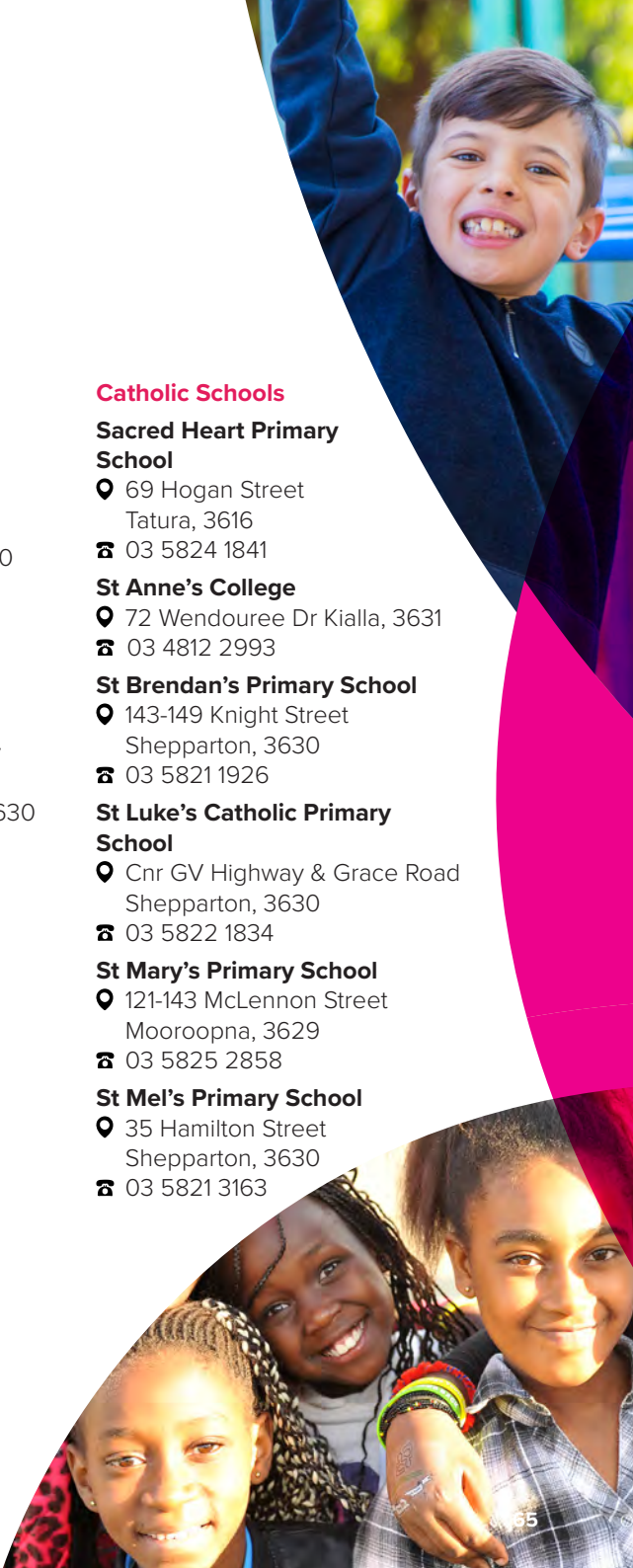
📍 Cnr GV Highway & Grace Road  
Shepparton, 3630  
☎ 03 5822 1834

### St Mary's Primary School

📍 121-143 McLennon Street  
Mooroopna, 3629  
☎ 03 5825 2858

### St Mel's Primary School

📍 35 Hamilton Street  
Shepparton, 3630  
☎ 03 5821 3163









GREATER  
SHEPPARTON

# AMENDMENT TO DIRECTORY

## **Updating your information**

The content of the City of Greater Shepparton Family and Children's Services Directory was correct at the time of printing. The Council's Early Years Services team have made every effort to provide correct information and contact details.

If you find any contact details have changes, please let us know by sending us the correct details to update the information for the next publicaion.

## **Please send revised information to:**

Greater Shepparton City Council  
Early Years Services  
90 Welsford Street  
Ph: (03) 5832 9783  
Email: [council@shepparton.vic.gov.au](mailto:council@shepparton.vic.gov.au)  
**[www.greatershepparton.com.au](http://www.greatershepparton.com.au)**

December 2024